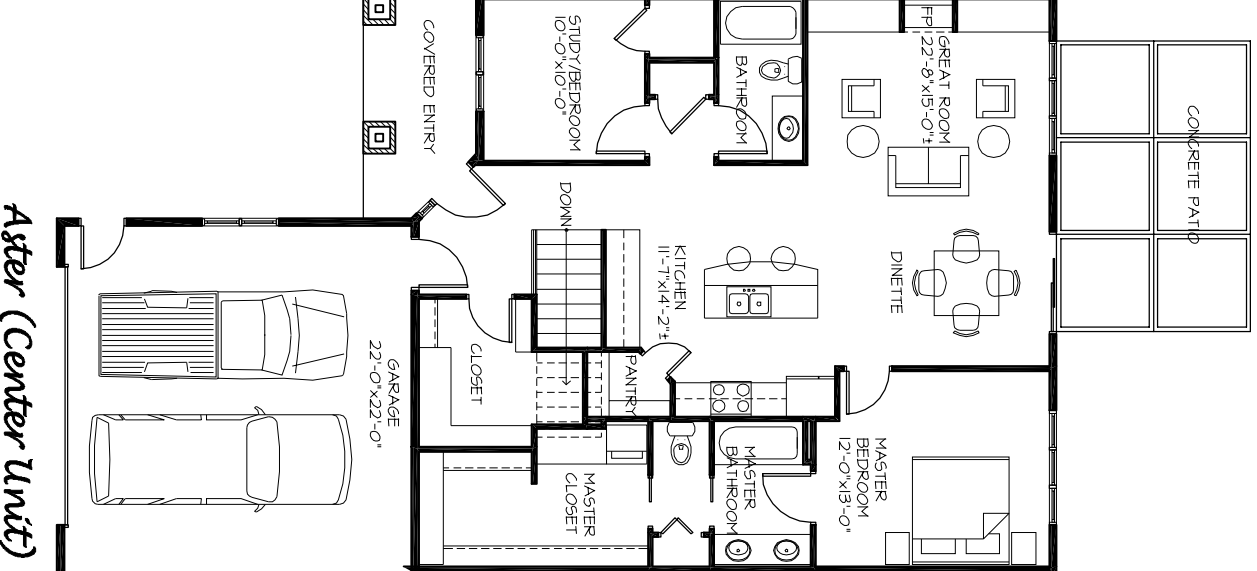
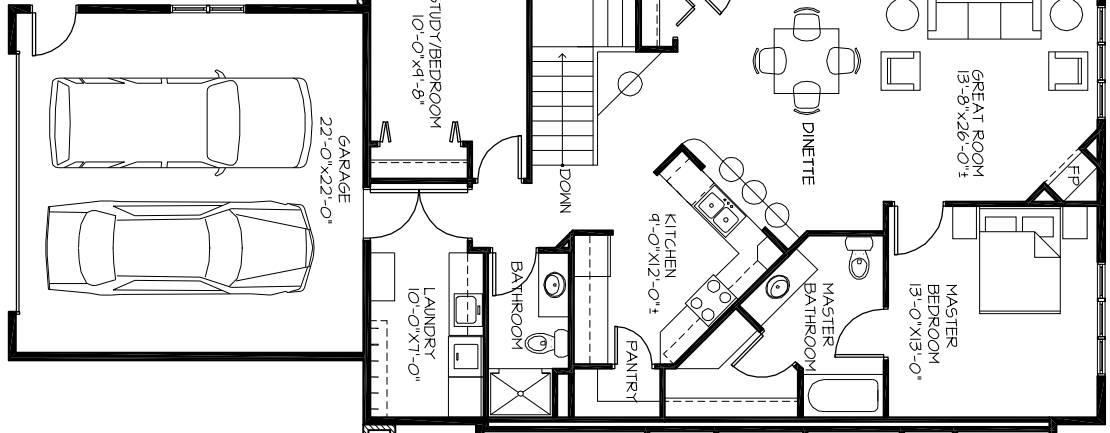


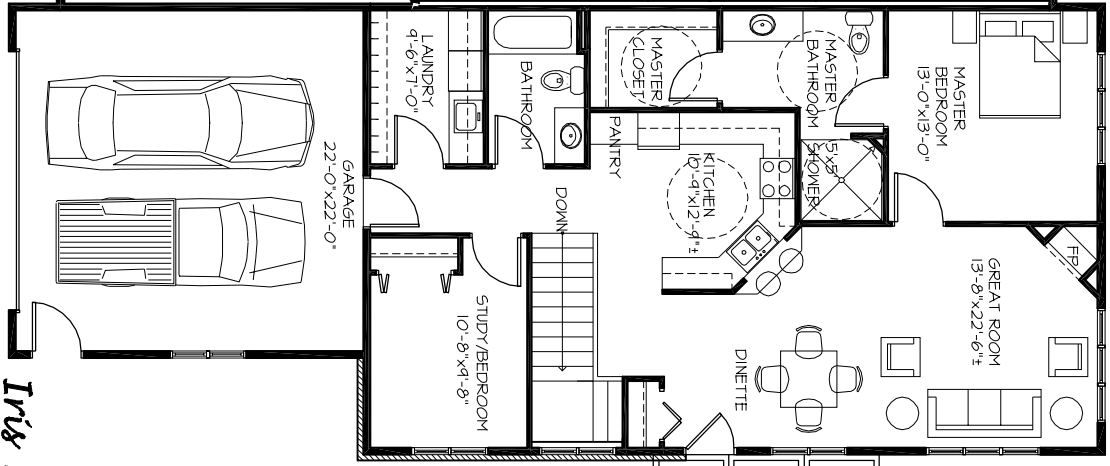
***Tris (End Units)***

MAIN FLOOR: 1288 S.F.  
 GARAGE: 484 S.F.  
 COVERED PATIO: 140 S.F.



***Aster (Center Unit)***

MAIN FLOOR: 1392 S.F.  
 GARAGE: 484 S.F.  
 CONCRETE PATIO: 216 S.F.  
 NOTE: 10' CEILING HEIGHT



***Tris 2 (End Units)***

HANDICAP ACCESSIBLE UNIT  
 MAIN FLOOR: 1288 S.F.  
 GARAGE: 484 S.F.  
 COVERED PATIO: 140 S.F.